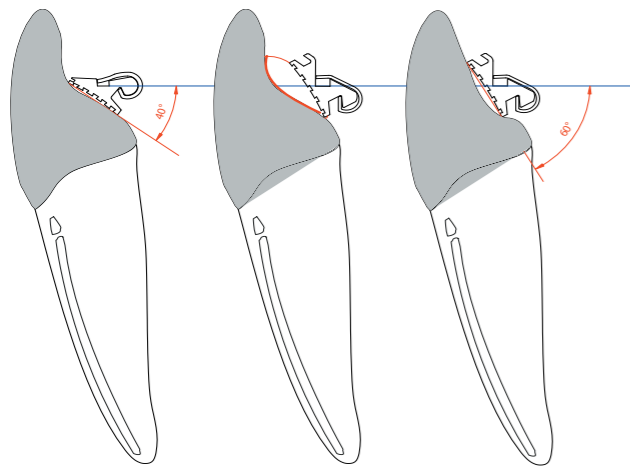


Which bracket 40° OR 60° ?



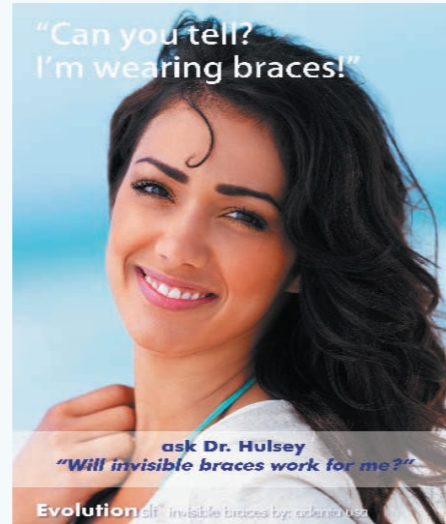
Due to the variation of the lingual crown surface, two **JOY®** Lingual brackets are available 40° and 60° base inclination. Choosing the correct degree will help keep the **JOY®** Lingual bracket as close as possible, creating a low comfortable profile.

NOTE: (Degree values are NOT torque or tip values, but only lingual crown anatomical inclination values.

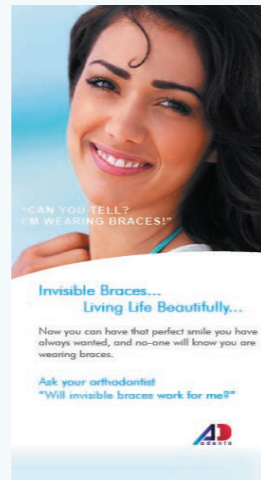
JOY® LINGUAL

Marketing & Merchandising Support

Poster 20x30 300-poster



Patient Brochure 300-brochure



Consultation Model 300-model



Design Services Available

- Website design
- Postcard design
- HTML emails design



JOY® LINGUAL BRACKET 40°

JOY® Lingual 40°	Right & Left
UPPER	ITEM #
Central	350-40U
Lateral	350-40U
Cuspid	350-40U
1 + 2 Bicuspid	350-14/15
LOWER	
1 + 2 Lower Anterior	350-40L
Cuspid	350-40L
1 + 2 Bicuspid	350-14/15

JOY® LINGUAL BRACKET 60°

JOY® Lingual 60°	Right & Left
UPPER	ITEM #
Central	350-60U
Lateral	350-60U
Cuspid	350-60U
1 + 2 Bicuspid	350-14/15
LOWER	
1 + 2 Lower Anterior	350-60L
Cuspid	350-60L
1 + 2 Bicuspid	350-14/15

JOY® LINGUAL IDENTICAL TEETH

Tooth	40°	60°
13,12,11,21,22,23	350-40	350-60
33,32,31,41,42,43	350-40L	350-60L
14,15,24,25,34,35,44,45	350-14/45	350-14/45
16,17,26,27,36,37,46,47	coming soon	-----