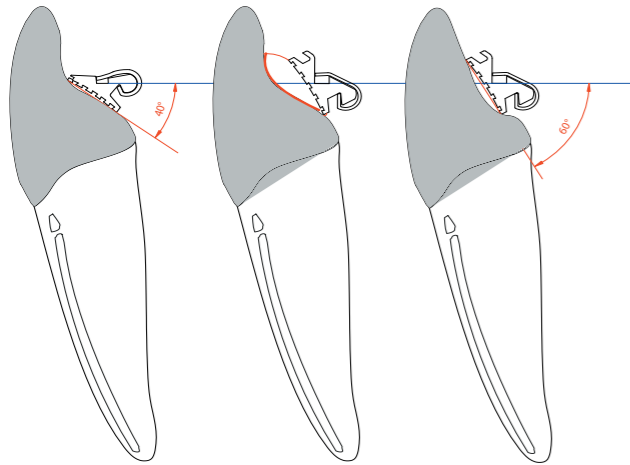


Which bracket 40° OR 60° ?



Due to the variation of the lingual crown surface, two **EVOLUTION SLT** brackets are available 40° and 60° base inclination. Choosing the correct degree will help keep the customized base to be as thin as possible, creating a lower and more comfortable profile.

Base inclination should be determined during the lab process. After the therapeutic setup has been completed and the brackets are attached to the lingual wire.

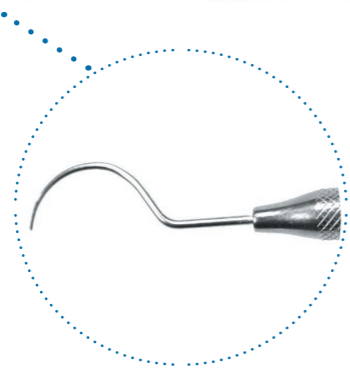
NOTE: (Degree values are NOT torque or tip values, but only lingual crown anatomical inclination values.)

Opening Instrument



Item # 68-1003

Designed to open the spring clip of the **EVOLUTION SLT** Lingual Bracket



**EVOLUTION SLT** SELF-LIGATING LINGUAL BRACKET

Evolution SLT <sup>®</sup> 40° UPPER & LOWER	Right & Left ITEM #
Central	300-40
Lateral	300-40
Cuspid	300-40
Anteriors	300-40
1 + 2 Bicuspid	300-14/45
Molar Base WIDE	300-10W
Molar Base Slim	300-10S

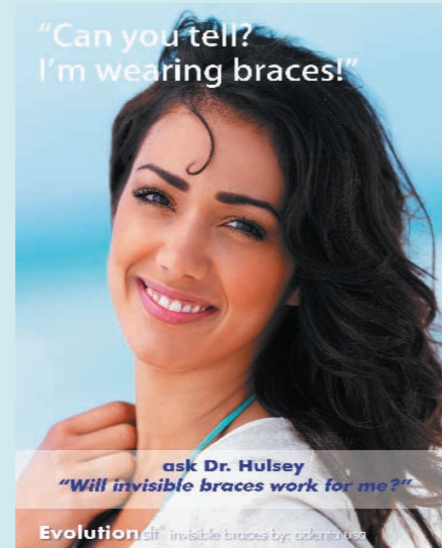
**EVOLUTION SLT** SELF-LIGATING LINGUAL BRACKET

Evolution SLT <sup>®</sup> 60° UPPER & LOWER	Right & Left ITEM #
Central	300-60
Lateral	300-60
Cuspid	300-60
Anteriors	300-60
1 + 2 Bicuspid	300-14/45
Molar Base WIDE	300-10W
Molar Base Slim	300-10S

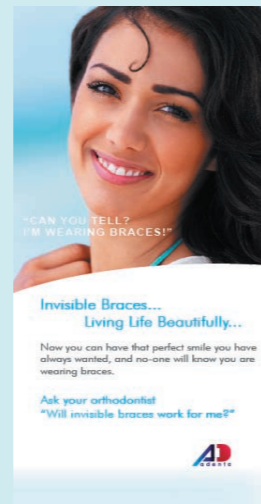
**EVOLUTION SLT** SELF-LIGATING IDENTICAL TEETH

Tooth	40°	60°
11,12,13, 21,22,23,31,32,33,41,42,43	300-40	300-60
14,15,24,25,34,35,44,45	300-14/15	300-14/15
Molar Base WIDE	300-10W	300-10W
Molar Base Slim	300-10S	300-10S

**EVOLUTION SLT**<sup>®</sup>  
Marketing & Merchandising Support



Patient Brochure 300-brochure



Consultation Model 300-model



**Design Services Available**

- Website design
- Postcard design
- HTML emails design

Please call our office for more details